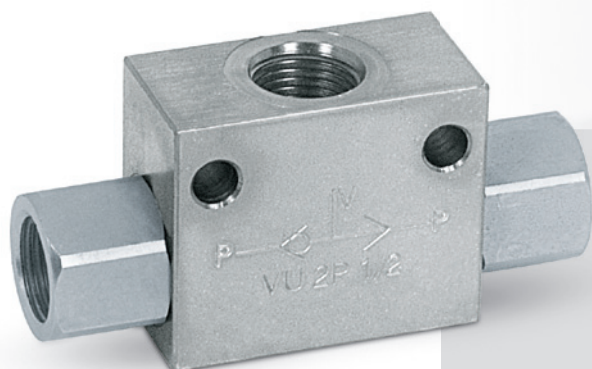


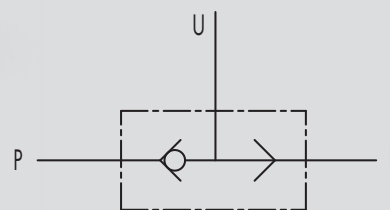
6.5 - VALVOLE COMMUTATRICI PER L'UTILIZZO DI DUE POMPE ALTERNATE

6.5 - SHUTTLE VALVES

TIPO/TYPE
VU2P



SCHEMA IDRAULICO
HYDRAULIC DIAGRAM



IMPIEGO:

Valvola utilizzata per selezionare, tra due segnali indipendenti di pressione, quello con valore maggiore ed escludere l'altro.

MATERIALI E CARATTERISTICHE:

Corpo: acciaio zincato
Guarnizioni: BUNA N standard
Tenuta: a sfera

MONTAGGIO:

Collegare gli attacchi P alle linee da selezionare e U alla linea da alimentare.

USE AND OPERATION:

This valve is used to select higher pressure between two pressure lines.

MATERIALS AND FEATURES:

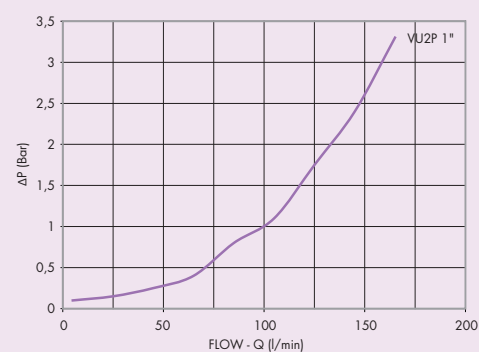
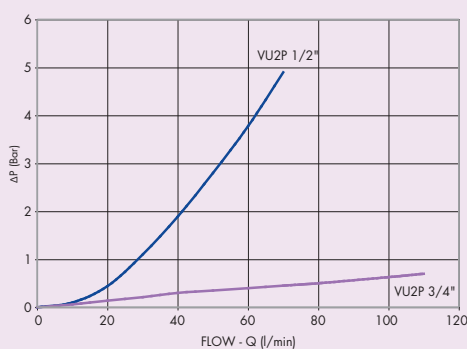
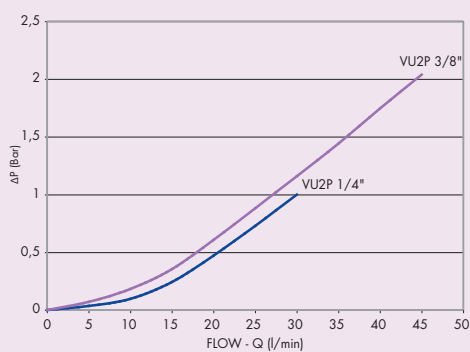
Body: zinc-plated steel
Seal: BUNA N standard
Tightness: ball type

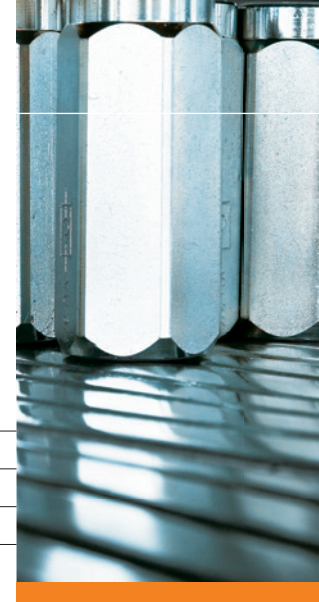
APPLICATIONS:

Connect ports P to the 2 lines to select and U to the line to feed .

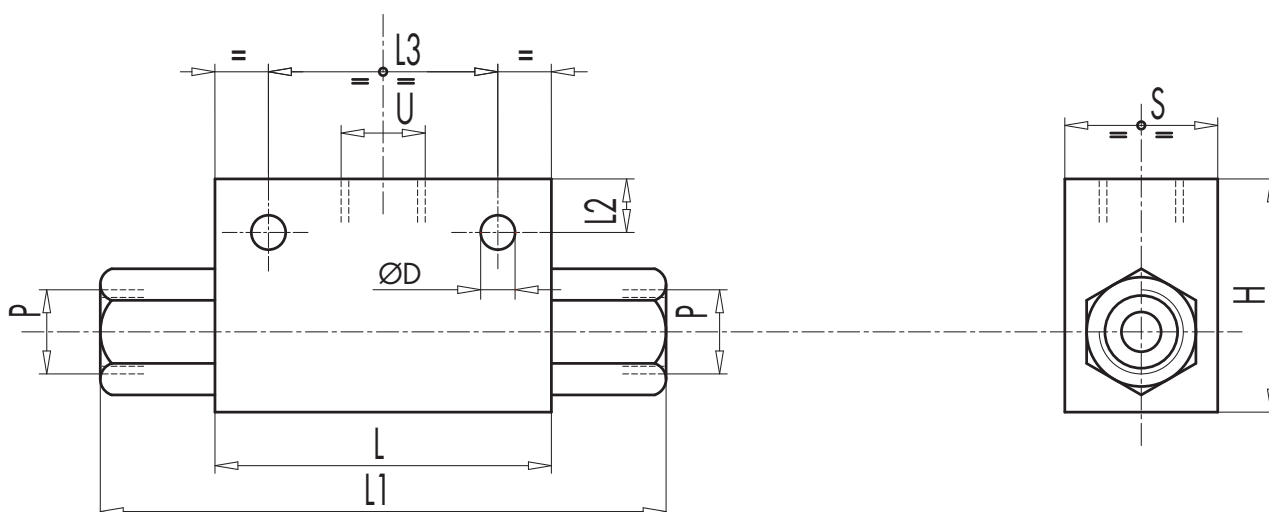
PERDITE DI CARICO PRESSURE DROPS CURVE

Temperatura olio: 50°C - Viscosità olio: 30 cSt
Oil temperature: 50°C - Oil viscosity: 30 cSt





CODICE CODE	SIGLA TYPE	PORTATA MAX MAX FLOW Lt./min	PRESSIONE MAX MAX PRESSURE Bar
V0666	VU2P 1/4"	30	450
V0668	VU2P 3/8"	45	450
V0670	VU2P 1/2"	70	450
V0680	VU2P 3/4"	110	350
V0685	VU2P 1"	150	300



6

CODICE CODE	SIGLA TYPE	U - P	L	L1	L2	L3	H	S	ØD	PESO WEIGHT
		GAS	mm	mm	mm	mm	mm	mm	mm	Kg
V0666	VU2P 1/4"	G 1/4"	60	104	9	44	40	30	8,5	0,560
V0668	VU2P 3/8"	G 3/8"	60	104	9	44	40	30	8,5	0,530
V0670	VU2P 1/2"	G 1/2"	60	104	12	44	50	30	8,5	0,652
V0680	VU2P 3/4"	G 3/4"	80	130	12	44	58	35	8,5	1,086
V0685	VU2P 1"	G 1"	80	120	11	60	80	50	10,5	1,870