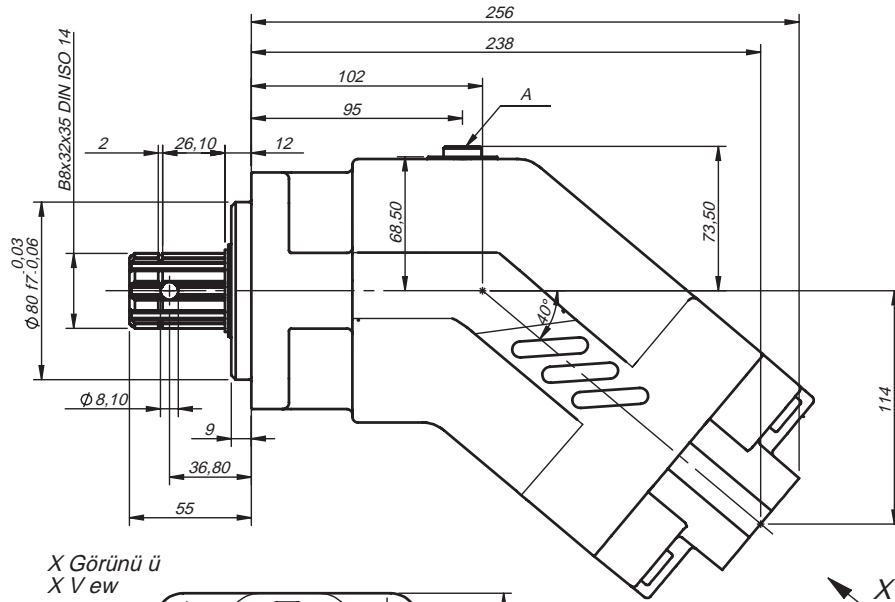
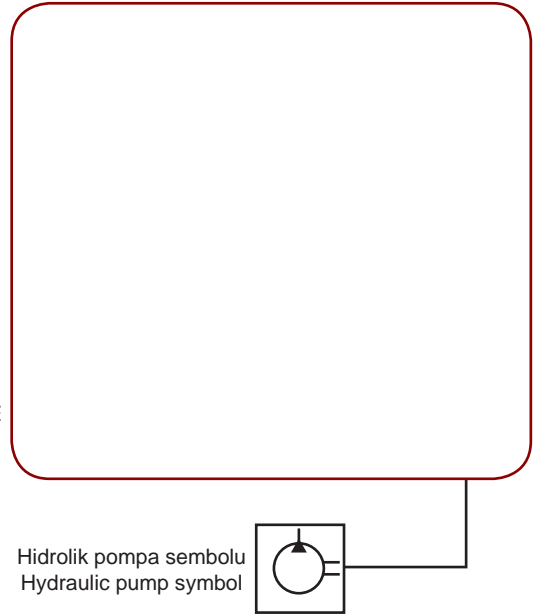
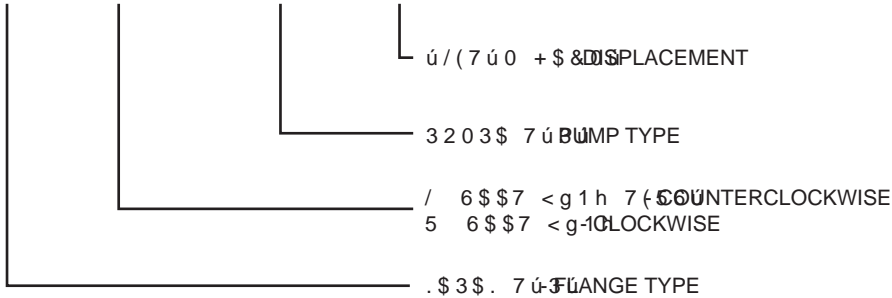


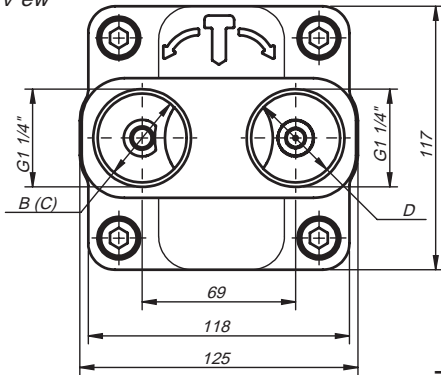
AXIS PUMP  
 )(<= (.6(1(/ 3203FEYZ AXIS PUMP

**ISO SERIE FEYZ-107-125**

.2'/\$0\$ 6ú67(000DE SYSTEMS **DIN 5462**  
 XXX - R(L) - XXX - XX



X Görünü ü  
 X View



. (£ ( 7\$. , 0 , SEAL KIT

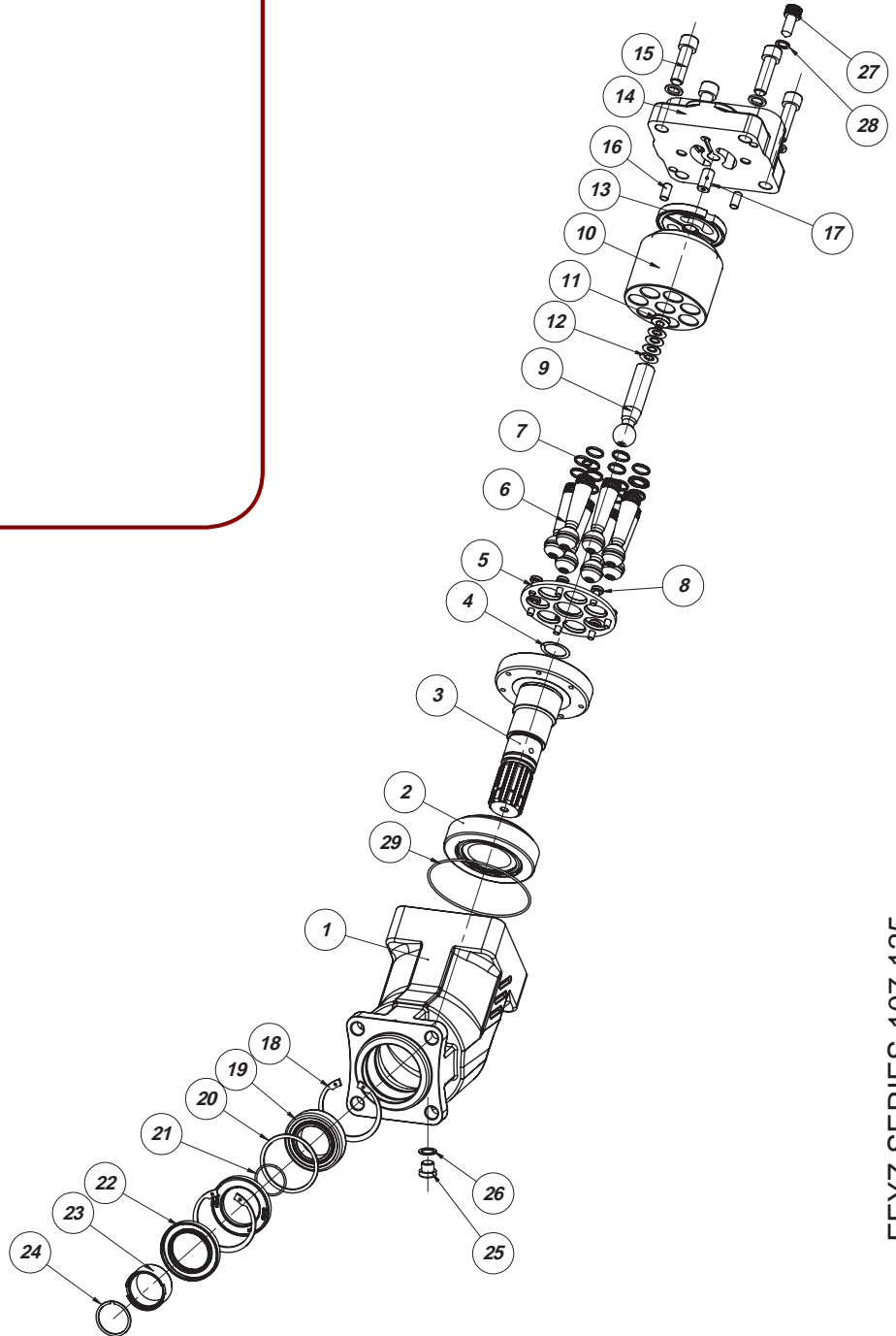
Connections	. XYYHW 7D \$000ePlygs	
B or C Service line Port	*	1 P
A Air bleed	*RU RSHUDWLRQ ÁX LG	1 P
	*	1 P

7(.1í. '\$7\$TECHNICAL DATA

Kod Code	Displacement FP UHY	Nominal Pressure EDU	Peak Pressure EDU	Max. Speed PLQ	Weight NJ
,625 / )(<=	106.7	300	350	1850	14.5
,625 / )(<=	124.5	250	300	1790	14.5

251(. 0217\$- é(0\$6,  
SAMPLE ASSEMBLY SCHEMA

<('(. 3\$5£\$ /í67( SPARE PART LIST



Pos	Code No	Description	qty
01	000254	Gš vde Body	1
02	200091	Rulman - Bearing	1
03	000255	Krank - Crank	1
04	200092	Pul - Washer	1
05	000282	Krank Piston Pulu - Crank Piston Washer	1
06	000266	Piston - Piston	7
07	200093	Ring - Ring	14
08	200094	Civata - Bolt	7
09	000274	Uzun Piston - Long Piston	1
10	000283	Rotor - Rotor	1
11	000286	< D \ 3 X O 7 S P i D y Washer Plug	1
12	200095	Raynel Yay Pulu - Raynel Spring Washer	4
13	000285	5 R W R U ) R O D C Flange	1
14	000284	\$ U N D . D i S c o v e r	1
15	200008	Civata - Bolt	4
16	200042	Pim - Pin	2
17	000287	Pim - Pin	1
18	200088	' H O L N ú o L - S e g m e n t	2
19	200085	Rulman - Bearing	1
20	000222	Kece Pulu- Seal Washer	1
21	200100	O-Ring - O-Ring	1
22	200087	Kece - Seal	2
23	000223	YŸ ksŸ- Ħhimble	1
24	200098	Segman - Segment	1
25	200006	Tapa - Plug	1
26	000288	Pul - Washer	1
27	200097	Civata - Bolt	1
28	200101	Pul - Washer	1
29	200096	O-Ring - O-Ring	1

% 2 < 8 7SIZE		22	33	45	65	80			
<HU 'HùLüW LUPH Displacement	cm <sup>3</sup>	21.9	32.9	45.6	64.5	80.4	90.7	106.7	124.5
0 D[ + x ] Max. Speed	rpm	2920	2890	2550	2300	2135	2050	1850	1790
'HEL + x ] x )ORZ 0D[	/ PLQ	67	91	115	145	166	183	191	217
0 D[ * • o 3RZHU 'ULYH	kw	30	45	55	70	85	90	95	105
Dš nme Gÿ cÿ Torque	EDU EDU	1 P107 1 P125	151 175	217 251	289 349	383 445	413 499	507 591	595 693
Dš nme Direnci Rotary Stiffness	1 P UDG	301	301	433	519	707	775	805	805
(NVHQ ' QG•UPH Axial Torque	*•F• kg/m <sup>2</sup>	0.0011	0.0011	0.003	0.0041	0.0073	0.0079	0.0113	0.0113
<DNOD ü x N \$ ü x UO x N Approximate Weight	kg	5.8	5.8	8	9	11.60	11.60	14.5	14.5

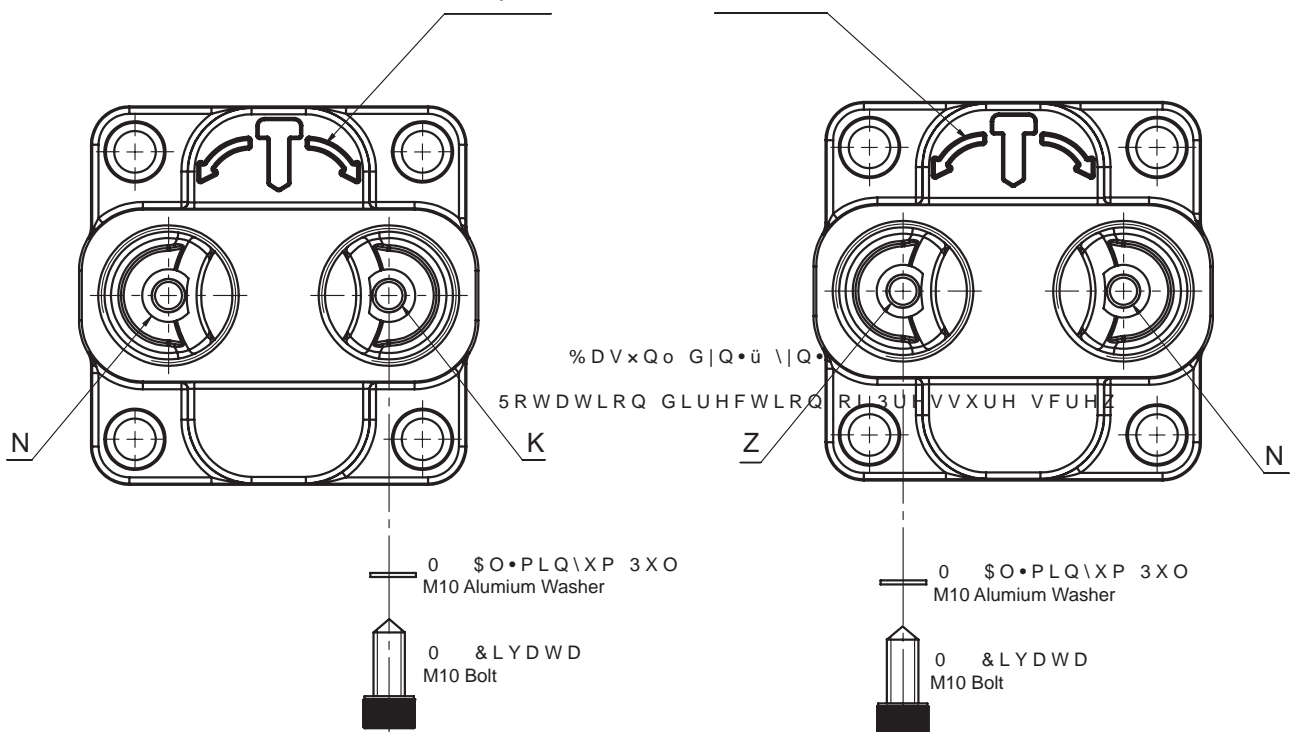
%X GHùHUOHU 1 HPLü Do x N NDO x U KDYD DO x UVD EDUGD PLQHUDO \ D  
GROD \ x WHNQLN YHULOHU G • üHU  
GHEL ND \ EL GDKLO

1)-These values apply at absolute pressures at suction opening >S< and operating on mineral oil Ö at 0,8 bar at suction port S reduced technical data

ÁRZ ORVV LQFOXGHG

0 9LGDQ x Q EDüO x ROG X ü X \ HU  
%DV x Qo o x N x ü SRUWX YH G | Q • ü \ | Q • G • U

7KH SODFH ÀWWHG 0 VFUHZ LV SUHV VXUH  
outlet port and direction of rotation.



%DV x Qo 9LGDV x dxN x ü 3RUWX . %DV x Qo 9LGDV x dxN x ü 3RUWX =  
2XWSXW . RI WKH VFUHZ RI WKH FR PŠUWHŠX WHG DRUWKH VFUHZ RI WKH FRPSUHV VHG D